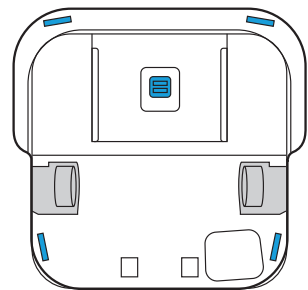


Care and Maintenance

Cleaning the Sensors and Pad Reader

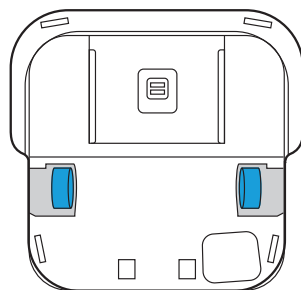
Clean the sensors on the bottom of your robot with a damp cloth.



Important: Do not spray cleaning solution or water onto the sensors or sensor openings.

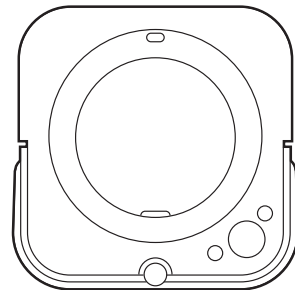
Cleaning the Wheels

Pull off any visible debris or hair that gathers around the wheels.



Cleaning the Body of the Robot

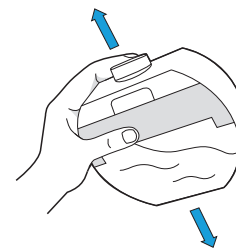
Wipe clean with a damp cloth.



Cleaning the Tank

If you notice an odour from the tank

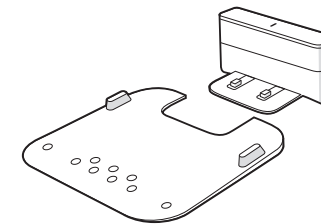
- 1 Remove the tank from your robot mop.
- 2 Fill the tank with warm water. Do not use boiling water.
- 3 Close the cap and lightly shake the tank.



- 4 Rinse the tank and repeat as necessary.

Cleaning the Drip Tray

- 1 Remove the robot from the charging station.
- 2 Separate the drip tray by lifting it up off the charging station.



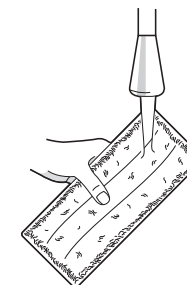
- 3 Clean the drip tray with a damp cloth or with warm water in the sink.
- 4 Dry thoroughly before reattaching the drip tray to the charging station.
- 5 Put your robot mop back onto the charging station.

Caring for Washable Cleaning Pads

Note: You can clean your washable pads in two ways: either by hand washing or in a washing machine.

Hand Washing

Thoroughly wash the pad with warm water.



Machine Washing

Wash using the warm cycle, then air dry. Do not tumble dry. Do not wash with delicates.

