



IXL[®]

since 1858

Installation Instructions and User Guide

ventflo[®] DUCTED VENTILATION

Model: 10334 Ventflo Ducted Ceiling Exhaust Fan 200 (280m³/hr or 77l/s)

Model: 10336 Ventflo Ducted Ceiling Exhaust Fan & Light 200 (280m³/hr or 77l/s)

Model: 10337 Ventflo Ducted Ceiling Exhaust Fan 250 (360m³/hr or 100l/s)

Model: 10338 Ventflo Ducted Ceiling Exhaust Fan and Light 250 (360m³/hr or 100l/s)

Electrical Rating: 230~240 V. 50 Hz.

www.ixlappliances.com.au

www.ixlappliances.co.nz

Welcome

Thank you for buying this IXL Ventflo Ducted Ventilation. Even if you have used a Ventflo before, there are very good reasons to read this user guide before using this one:

- You and your family, property and home will be safe from harm.
- You will learn how this appliance may differ from others.
- By using the Tastic fully and properly, you will get maximum life and value from it.
- Our warranty depends on you using the Tastic according to this user guide. It will only take you a few minutes, so please read on!

Contents

Safety	Pg 3
Warning & Caution	Pg 4
Clearances	Pg 5
Installation	Pg 6-8
Ventilation Requirements	Pg 9
Cleaning & Warranty	Pg 10-11
Warranty Registration	Pg 12

Safety



Do not allow insulation material to rest against the sides or top of the ventilation unit when installed.

Read through these instructions fully before commencing installation.

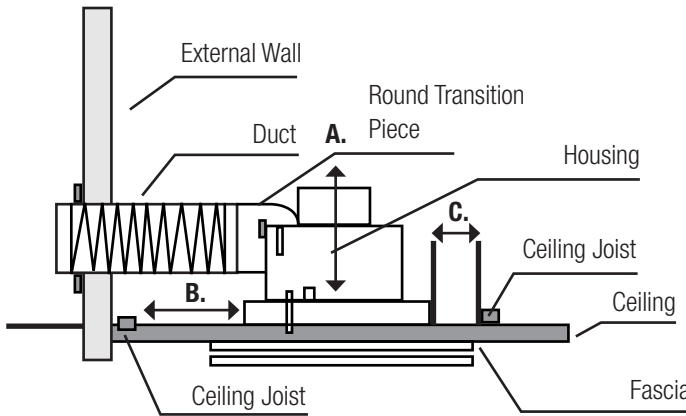
Locate the IXL Ventflo in accordance with the requirements of the current Australian/New Zealand Wiring Rules AS/NZS 3000 relating to damp situations, or according to applicable Wiring Rules for installations outside of Australia and New Zealand. In some installations this may mean that no part of the appliance may be located directly above any part of a bath or shower recess or enclosure. For unenclosed showers refer to Wiring Rules conditions. This unit is fitted with a cord and plug, however, any interconnecting wiring and switches used or use of another cord and plug must be fitted by a licensed electrician.

Switches and other controls must not be located where they can be touched by a person in the bath or shower.

WARNING

- Pull out the power plug before cleaning or maintenance.
- Do not use this appliance for functions other than those described in this user guide.
- After removing the appliance from its packaging, ensure that it is complete and undamaged. If in doubt contact a qualified electrician or IXL Home. Do not leave packaging within the reach of children or infirm persons.
- This appliance is not intended for use by persons (including children) with reduced physical, sensory or mental capabilities, or lack of experience and knowledge, unless they have been given supervision or instruction concerning the use of the appliance by a person responsible for their safety.
- Young children should be supervised to ensure they do not play with the appliance.
- Do not operate the appliance in the presence of inflammable vapours (alcohol, insecticides, petrol, etc.)
- Do not sit or place objects on or in the appliance.
- The power cord cannot be replaced. If the cord is damaged the appliance should be scrapped.
- Do not operate this appliance without the fascia in position.
- This appliance must be mounted with the lowest point at least 2.1 metres from the floor.
- Ensure that the fan is switched off from supply mains before removing the grille/guard.
- This unit is suitable for use with exhaust ducting.
- Do not make modifications of any kind to this appliance.
- Do not expose this appliance to the weather (rain, sun, etc.)
- Do not immerse the appliance or any parts of it in water or other liquids. Refer to the relevant instructions to clean the appliance (refer to Cleaning)
- If the appliance does not function correctly or develops a fault, contact IXL Home immediately.
- Should the appliance be dropped or suffer a heavy blow, have it checked by an authorised service agent for IXL products.
- The electrical system to which the appliance is connected must conform to applicable standards.
- The electrical power supply/socket to which the appliance is to be connected must be able to provide the maximum electrical power required by the appliance. If it can't do this, contact a qualified electrician to make the necessary modifications.
- Switch off the appliance at the installation's main switch:
 - a) if the appliance does not function correctly;
 - b) before cleaning the outside of the appliance;
 - c) if the appliance is not going to be used for any length of time.
- The room must have an adequate source of replacement air for this appliance to function effectively. Moreover, if there is any non-sealed combustion based appliance such as a water/gas heater, gas stove etc. in the same room, air replacement must be sufficient for all appliances to work effectively together.
- Keep the appliance's inlet grille/guard free from dust to ensure optimum air flow.

All appliances must be mounted so that the lowest point is at least 2.1m above the floor. The IXL Ducted Ventflo Ceiling Exhaust Vent is designed to fit a ceiling cavity with a minimum height of 210mm (for models 10334/10336) and 242mm (for models 10337/10338) (A) (Figure 1) when installed in a well ventilated roof cavity. Ensure the outlet of the Ventflo is directed towards the external wall. If the desired orientation of the Ventflo directs the ducting across ceiling joist ensure that the closest ceiling joist is not within 200mm of the Ventflo (B).



- A.** Total Ceiling Cavity Requirement (mm)
Minimum 210mm for Ventflo 200 model (Product Code 10334 and 10336).
Minimum 242mm for Ventflo 250 model (Product code 10337 and 10338).
- B.** 200mm.
- C.** 40mm minimum clearance on the two vertical sides.

Fig. 1: Clearances

Use

1. Turn the switch on/off to make sure the unit runs.
2. Running the fan can exhaust steam and odours quickly and efficiently.
Note: Shut off power urgently when any abnormalities occur in operation. Then call a licensed electrician or IXL service person for inspection and necessary service work.
3. Do not insert fingers or thin bars into the grille when the unit is operating.
This could cause harm to yourself and the appliance.
4. The unit must not be installed in a place that suffers from severe water leakage.
5. This unit included a 12W integrated LED light (only model 10336 and 10338).

Important considerations before installing

- Joists, beams and rafters shall not be cut or notched to install the appliance.
- For the exhaust fan to work efficiently, replacement air of a volume equivalent to what is being extracted must be able to enter the room. In general this air would be drawn from underneath a door or through a slightly open window. If the room is airtight the fan will function poorly.
- This product is designed for installation in flat ceiling only. Do not mount it on a sloping ceiling or vertical wall.

Installing the Unit

1. Locating the unit – Before commencing any cutting, check in the ceiling space that there are no obstructions such as ceiling joists and that there is sufficient clearance for the housing. Check that the electrical wiring can be routed from the wall switches to the mounting location.
2. Prepare the ceiling – Using the template provided, mark the ceiling with a pencil outline and cut out the required hole. In order for the warranty to be honoured, the fan must be installed:
 - a. At least 2.1m above the ground.
 - b. At least 90cm from any hotplate.
 - c. At least 20cm distance from side walls.
 - d. Ensure the power supply cord does not interfere with the fan blades.
3. Cut the hole in the ceiling lining using an appropriate saw following the marked line.
4. Connect the fan into the wall socket. On the Ducted Ventflo Vent & Light models (product code 10336 and 10338), plug in the LED cable connector from the unit to the fascia.
 - a. Push the fan into the ceiling opening and secure the exhaust fan. Using a screwdriver (or a battery driver with a low torque setting) partially tighten the screws securely. This will move the mounting clips into the open position and hold the unit to the ceiling (Fig 2)
 - b. Ceiling thickness should be adjusted to enable the mounting clips to be fitted without excessive force.
 - c. Do not over tighten the screws as this can damage plasterboard.

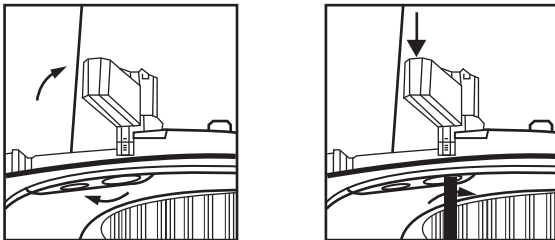


Fig. 2: How to secure the unit to the ceiling

5. When installing the fascia, put the two retaining springs on the fascia (Fig 3) into the two slots in the unit and make sure the fascia is well fixed to the unit.



Fig. 3: Fascia retaining springs side view

6. Squeeze the springs from the fascia together and insert into the slots provided in the fan assembly.
7. To remove fascia, ensure the power of the unit is OFF. Pull the fascia down gently, un-attach the retaining springs from the fascia to the unit and unplug the LED cable from the fascia (for models 10336 and 10338). Pulling the fascia down with force will damage the fascia, the LED cable (for models 10336 and 10338) and the unit.
8. Precautions must be taken to avoid the back-flow of gases into the room from an open flue gas heater or other open fire appliances.

Installing Ducting

1. Ducting is not included in this model.
2. Ducted Ventflo have been designed for use with 125mm diameter (for model 10334 and 10336) and 150mm diameter (for model 10337 and 10338) flexible ducting. For optimum performance keep the duct length straight and taut and as short as possible. It is recommended not to exceed a duct length of 3 meters. Refer to Fig's 4-6 to attain optimum performance.
3. Tape duct to round transition piece on unit. Note: On models 10337 and 10338 they have an oval transition. The 150mm flexible duct will need to be shaped to fit over the transition.
4. Feed ducting through hole in ceiling. While feeding ducting into ceiling direct it towards the installation position of the outlet grille.
5. Attach and secure ducting to outlet grille.

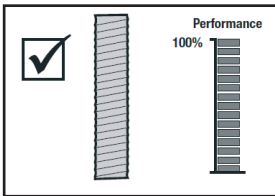


Fig. 4: Straight ducting

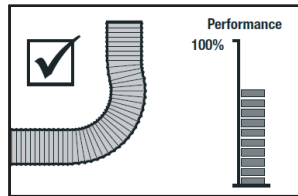


Fig. 5: Gradual bends, ducting stretched straight

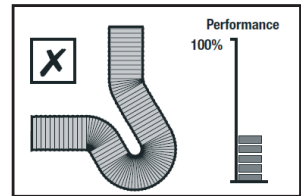
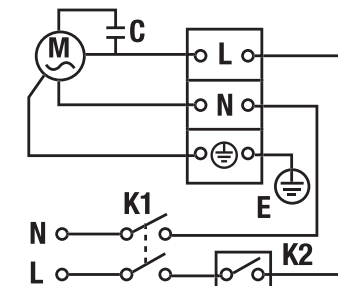


Fig. 6: Tightly compressed bends

Electrical Requirements

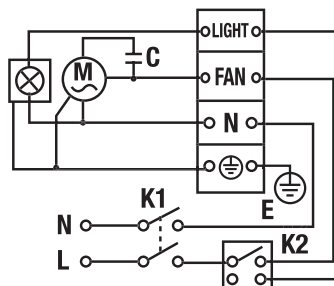
See the wiring diagram (Fig. 7 - 8) for supply requirements and maximum loadings for each model.

Fans may be connected to a lighting power circuit if loading permits. Wiring of the wall switch (not provided) and socket outlet in roof cavity must be carried out by a registered electrician. The wall switch should be located in accordance the Wiring Rules AS/NZS 3000. It must not be installed where it can be reached by a person in the bath or shower.



M: Motor **C:** Capacitor
K: All-pole disconnection switch

Fig. 7: Wiring Diagram for Ducted Ceiling Exhaust Fan (product code 10334/10337)



M: Motor **C:** Capacitor
K: All-pole disconnection switch

Fig. 8: Wiring Diagram for Ducted Ceiling Exhaust Fan & Light (product code 10336/10338)

For maximum efficiency and fan performance there are a few key points to keep in mind when installing your IXL Ventflo Ducted range.

Sufficient air inlet into room

Steam will only be removed if there is sufficient flow of air through the room. Ensure generous inlets exist through windows, vents or under the door. Air flow path from inlet to fan should ideally pass over the steam sources. (See Fig 9).

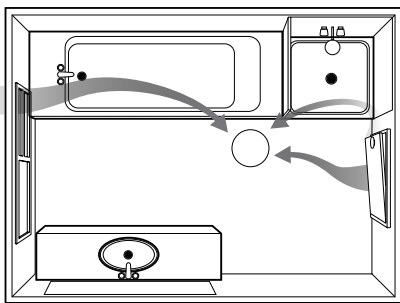
If you live in a traditionally cooler climate, in the winter months during hot showers, you may notice that there is more moisture and condensation build up. If this is the case, you may wish to improve your natural ventilation or invest in an additional exhaust fan.

Bathrooms which have high ceilings, are larger than average, or have an open shower may all require additional ventilation.

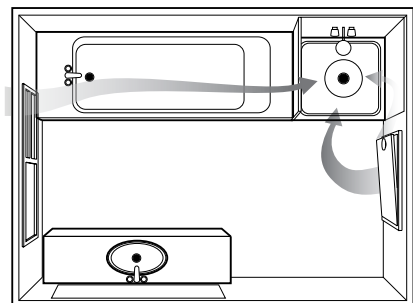
Where ventilation space is restricted

This product is not recommended for installation between floors of multi-storey dwellings, or where space within the roof cavity is severely restricted and a flue cannot be fitted. IXL has other Ventilation products available that are particularly suited to installations between floors or where space is restricted.

For further details and suggestions on effectively ventilating your bathroom, please visit our website www.ixlappliances.com.au or contact IXL Home customer service team.



Shown installed between shower and bath



Shown installed above shower

Fig. 9: Ideal placement of Ducted Ventflo. Sufficient air inlets into room are required

1. Shut power off before cleaning or maintenance.
2. To remove fascia for cleaning, ensure the power of the unit is OFF. Pull the fascia down gently, unattach the retaining springs from the fascia to the unit and unplug the LED cable from the fascia (for models 10336 and 10338). Pulling the fascia down with force will damage the fascia, the LED cable (for models 10336 and 10338) and the unit.
3. The fascia can be cleaned either by a damp cloth or by simply removing the dust with a soft bristle brush.

Warranty

Two Year Replacement Warranty

This Warranty against defects for your newly purchased IXL product is proudly prepared by IXL Home Pty Ltd of 1K Marine Parade, Abbotsford, VIC 3067, phone 1300 727 421.

1. IXL Home Ventilation products come with guarantees that do not exclude the following consumer entitlements under the Australian Consumer Law:
 - a. replacement or refund for a major failure and compensation for any other reasonably foreseeable loss or damage; and
 - b. to have the goods replaced if goods fail to be of acceptable quality and the failure does not amount to a major failure.
2. IXL Home warrants that your product and related supply will be free from defects in materials and workmanship during the warranty term.
Your warranty term is two years commencing from the date of purchase.
3. Subject to Point 1, IXL Home will during the warranty term provide a replacement of an equivalent current model where the balance of the warranty period from the original date of purchase will take effect.
4. To the fullest extent permitted by law and subject always to Point 1, IXL Home will not be liable for:
 - a. any loss or damage arising from loss of use, loss of profits or revenue; or
 - b. for any indirect or consequential loss or damage resulting from any breach of this warranty against defects.
5. Defective IXL Home products may be replaced by a refurbished product of the same type.

Limitations to Your IXL Warranty

6. Subject to Point 1, this Warranty:

- a. will only be provided to the original purchaser where the original purchase was made from a IXL Home Authorised Dealer or Reseller and proof of such purchase can be presented at the time of service;
- b. only applies to IXL Home products purchased in Australia and New Zealand from an IXL Home Authorised Dealer or Reseller;
- c. will not apply where the defect in or failure of the product is attributable to misuse, abuse, accident or non-observation of the manufacturer's instructions. This product must be used in accordance with the manufacturer's instructions;
- d. will not cover faults due to normal wear and tear with reasonable use nor consumable components such as globes, filters, glass items etc;
- e. will not cover any damages or problems caused to this product by natural forces eg. storm, fire, flood, and earthquake; or by intrusion or accumulation (or both) of foreign matters eg. dust, soil, and moisture. IXL Home recommends that you take out appropriate insurances to protect your product to this end;
- f. will not apply if this product is installed in a mobile dwelling eg. caravan or boat;
- g. will not apply if this product is removed from the location where it was first installed;
- h. covers use of this product for domestic use only;
- i. will not be restarted or extended upon replacement of the product or a part.

How to make a claim under your IXL Warranty

7. To make a claim under this Warranty you will need to:

- a. contact IXL Home customer service department on 1300 727 421 or service@ixl.com.au for Australia and 0800 727 421 or service@ixl.com.au for New Zealand to provide details and register your claim enabling a IXL Home assessment;
 - b. submit proof of purchase with your claim eg. tax invoice or purchase receipt;
 - c. where a property has been constructed by a builder/developer and it is fitted with IXL products, please submit proof of purchase by way of the certificate of occupancy, with your claim.
- 8.** IXL Home will contact you to make arrangements for a replacement product.

Privacy

The privacy of your personal information has always been important to us. To learn more about how we collect, keep and use your personal information, please obtain a copy of our privacy statement by visiting our website at: www.ixlappliances.com.au or by contacting us via email on service@ixl.com.au or by telephone on 1300 727 421.

Ventflo

Warranty Registration



Visit IXL Home website below to register your warranty details online.

Australia

www.ixlappliances.com.au/warranty

New Zealand

www.ixlappliances.co.nz/warranty

For comments, questions or warranty matters:

IXL Home Pty Ltd

Australia:

Free Call: 1300 727 421
service@ixl.com.au
www.ixlappliances.com.au

New Zealand:

Free Call: 0800 727 421
service@ixl.com.au
www.ixlappliances.co.nz

